



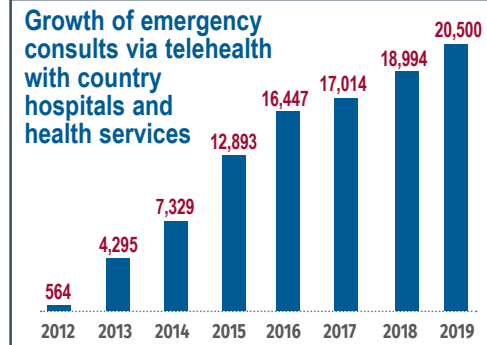
# Snapshot: WACHS Command Centre



## Emergency Telehealth Service

Supports WA's country doctors and nurses caring for patients by providing 24/7 access to specialist emergency clinicians by videoconference.

Established in 2012, the ETS is now a world leader in virtual regional emergency care.



More than **116,000** ETS consultations since inception in 2012

**394** Average ETS consults a week

\*Data sources include webEOC. Extracted September 2020.

### Care closer to home

**Around 71%** Percentage of ETS patients who are discharged from their local hospital without needing to be transferred elsewhere for treatment

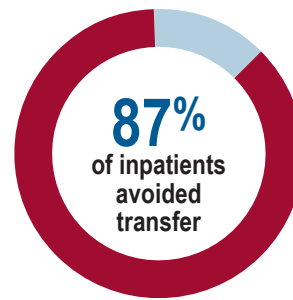


## Inpatient Telehealth Service

Provides virtual ward rounds to patients admitted to our country hospitals when the local GP is unavailable.



Currently available in **58** country sites



Enabled **561** country inpatients to stay closer to home since January 2018

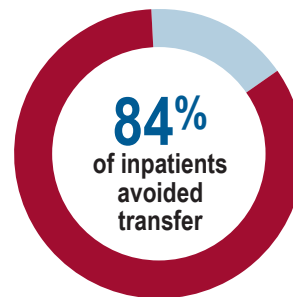


## Mental Health Emergency Telehealth Service

Provides WA country doctors and nurses with access to specialist mental health nurses and psychiatrists, to assist in caring for people presenting to our hospitals and nursing posts.



Currently available in **85** country sites



**1,772** Number of patients seen since July 2019

Coming in 2021



## Acute Specialist Telehealth Service

Provides country clinicians and their patients with access to a range of specialists using three-way videoconferencing facilities.



## Acute Patient Transfer Coordination

A coordination centre that oversees safe, timely and efficient patient transfer to and from regional and metropolitan hospitals for admitted country patients.



## Advanced Patient Monitoring System

A monitoring centre that uses advanced technologies and real-time information to support doctors and nurses in detecting and responding to unwell patients in country hospitals and nursing posts.