



Genesis CancerCare Lodge

YOUR HOME AWAY FROM HOME BY THE SEA
IN TWO ROCKS



Jo contacted Genesis CancerCare for assistance. With the help of some amazing people and generous businesses, Genesis CancerCare set about bringing the vision to life.

The result is a place, managed by dedicated volunteers, that we hope exceeds your expectations.

Genesis CancerCare Lodge is a two-storey, boutique property with four comfortable rooms. Each room accommodates two people, enabling a family member or carer to stay with the patient, if desired.

Upper level

- Two twin rooms (2 x king single beds)
- One king room (1 x king size bed)

Ground level

- One room for patients with reduced mobility (2 x king single beds)

Each room is equipped

- Ensuite bathroom
- TV/DVD/Foxtel
- Bar fridge
- Tea & coffee making facilities
- Split-system air-conditioning
- Towels and bed linen

All upper level rooms have individual balconies with ocean glimpses.

Living and kitchen areas

- TV
- Gas fireplace
- Comfortable lounges
- Communal dining table
- Large kitchen with all modern appliances
- Relaxing outdoor terrace with barbecue facilities

Car parking

There is plenty of free, on-site car parking.

Accommodation Fees

The Lodge is registered with the Patient Assisted Travel Scheme (PATS). This scheme subsidises the cost of each night's accommodation for eligible patients and their carers who live at least 100 km away from a treatment facility. The PATS scheme provides \$60* per night per patient or up to \$75* per night per patient travelling with one approved carer.

In keeping with its philosophy, the Lodge does not charge an excess fee – PATS eligible patients and their carers do not incur any out-of-pocket accommodation expenses.

Additional relatives or carers wishing to stay at the Lodge who do not meet the PATS criteria will be charged at \$130* per night per person. Patients take priority on room availability.

*At the time of writing (October 2015). All fees are subject to change without notice.

What should I bring?

Everything is provided apart from food, toiletries and your own personal items.

Food

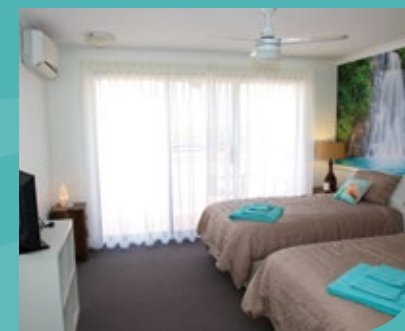
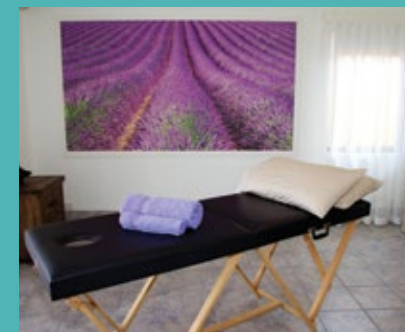
A continental breakfast is available each morning at a charge of \$10.00 per person.

Additional meals are not supplied, but you are welcome to cook in the kitchen. An IGA supermarket is a short drive from the Lodge. Patients who do not have their own transport can be driven to the supermarket at no cost.

Transport

A volunteer-operated and free transport service is available between the Lodge, Perth Airport and Genesis CancerCare's Shenton House in Joondalup. If you require transport, please contact the Lodge in advance.

For the tranquillity of all guests, please note that the Lodge does not accept children less than 12 years of age.



Genesis CancerCare is Australia's largest provider of radiation therapy services, offering rapid access to world class care that is entirely patient focused.

Treatment at Genesis CancerCare's Shenton House in Joondalup

Shenton House is a cancer day hospital where the most recent developments in radiation oncology, medical oncology and exercise are incorporated into patient care through a multidisciplinary approach. Patients are holistically managed from diagnosis through to treatment, ensuring that all therapeutic options are carefully investigated and explained.

Time is Vital

Shenton House consultants aim to see patients within one week of referral. Extended diagnostic testing is available if it has not already been carried out prior to consultation. If required, staff can assist in expediting the care and availability of other specialities. The centre also provides an urgent palliative response service.

Patient feedback ranks Genesis CancerCare in the top 1% of healthcare organisations in Australia.

Radiation Oncology

Radiation therapy is an integral part of cancer treatment. Shenton House consultants, together with their dedicated team of radiation therapists, specialised nurses, physicists and engineers, use the latest radiation oncology technology to develop and administer personalised treatment plans.

'It was really convenient being able to come to Shenton House rather than having to travel further afield. My doctors also explained my treatment really well.' Helen

Medical Oncology

Medical oncology treatments (chemotherapy and targeted therapies) take place in the Grace Unit. Designed with patient comfort in mind, it is staffed by two medical oncologists and a small team of highly-trained cancer nurses, offering one-to-one care.

Exercise Clinic

Patients attending Shenton House are able to participate in an individually tailored exercise program on site under the supervision of qualified cancer exercise physiologists.

Directed by the world renowned Exercise Medicine Research Institute at ECU, the program has been scientifically proven to reduce fatigue and treatment toxicity, improve quality of life, reduce the risk of cancer recurrence and maximise long-term health.^{1, 2, 3, 4} There are no out-of-pocket fees for this service.

**Exercise Medicine
Research Institute**

VARIO health clinic



Allied Health Services

Dietitian and other health services are available on request.

Financial Information

The Medicare rebate does not cover the full cost of radiation therapy. Special fees have been negotiated for patients staying at the Lodge who undergo radiation treatment at Shenton House. Genesis CancerCare also provides flexible payment options, making treatment affordable for most patients, irrespective of their financial situation.

Medical oncology, allied health and diagnostic services at Shenton House are fully private and excluded from the special fee scheme.

¹ Newton, R., Galvão, D. Exercise in prevention and management of cancer. *Curr Treat Options Oncol* 2008;9:135-146.

² Newton, R., Galvão, D. Exercise medicine for prostate cancer. *Eur Rev Aging Phys Act* 2013;10:41-45.

³ Cormie, P. et al. Can supervised exercise prevent treatment toxicity in patients with prostate cancer initiating androgen-deprivation therapy: a randomised controlled trial. *BJU Int*. 2015; 115(2):256-266.

⁴ Galvão, D. Taaffe, D. Spry, N., et al. Combined resistance and aerobic exercise program reverses muscle loss in men undergoing androgen suppression therapy for prostate cancer without bone metastases: a randomized controlled trial. *J Clin Oncol* 2010; 28(2): 340-347.

Genesis CancerCare Lodge

99 Two Rocks Road
Two Rocks WA 6037

Reservations 1300 977 062

e info@genesiscancercarelodge.com.au

f facebook.com/genesiscancercarelodge

www.genesiscancercarelodge.com.au

Boutique cancer patient accommodation

- PATS registered
- No out-of-pocket fees
- Free transport service available to/from treatment
- Free airport pick-up/drop-off on request

Shenton House

Level 3, 57 Shenton Avenue
Joondalup WA 6027

t 08 9400 6200 or 1300 977 062

f 08 9400 6217

www.genesiscancercarewa.com.au

Comprehensive cancer day hospital

- No waiting lists
- Radiation and medical oncology
- Latest techniques and equipment
- Exercise clinic
- Free parking
- Free WiFi
- Free complementary therapies
- Diagnostics
- Pharmacy
- Allied health
- Café

Medical Oncologists



Dr Tim Clay



Dr Andrew Dean

Radiation Oncologists



Asst. Prof
Raphael Chee
(Medical Director)



Dr Evan Ng



Prof Nigel Spry

